




# COMPANY PROFILE

UGEO SOLUTIONS SDN. BHD. (1396669-X)

A-22-18, CENTRAL RESIDENCE, SUNGAI BESI, 57100 KUALA LUMPUR, MALAYSIA.

Email : [admin@ugeos.com](mailto:admin@ugeos.com)

[www.ugeos.com](http://www.ugeos.com)

 [linkedin.com/company/ugeo-solutions](https://www.linkedin.com/company/ugeo-solutions)

# CONTENTS

PG 3	OVERVIEW
PG 4	CORE VALUES
PG 5	BUSINESS APPROACH
PG 6	SERVICE SCOPES
PG 7	MANAGEMENT TEAM
PG 8	RESEARCH ASSOCIATE IN GEOPHYSICS
PG 9	CHIEF SURVEYOR / DATA PROCESSOR
PG 10	SEISMIC PROCESSING TEAM LEAD
PG 11	ORGANIZATIONAL CHART
PG 12	CLIENTS & PERFORMANCES
PG 13	WORK RECORDS
PG 14	PARTNERSHIP



# OVERVIEW

**We provides consultancy services to Oil & Gas and Offshore Construction industries which covers a wide range of Marine Geophysical & Hydrographic Surveys, Topographic Survey, Geotechnical Engineering and Environmental Study. Our expertise deliver optimum solutions with cost effective to offshore industry players globally.**



## THE COMPANY

UGEOS SOLUTIONS SDN. BHD., was successfully incorporated in Malaysia on 8<sup>th</sup> December 2020. A strong background with proven competence of the project management team and highly skilled field professionals will lead to company's growth and success in delivering better results to offshore industry landscapes.

## OUR VISION

- ▶ To emerge as one of reputable Geoconsulting Services Company within the region and expanding our business across the border globally.

## OUR MISSION

- ▶ Focusing on industry business standard in all aspects to ensure a safe working environments.
- ▶ Creating values for industry players partnering us through innovation and expertise in respective fields.
- ▶ Ensuring sustainable industry while maintaining profitability.

# CORE VALUES

**| We pride ourselves and committed to our core values in doing works toward our business goals.**

## SAFETY

Always ensure safe work practices without harm to people and environment.



## RESPECT

We respect diversity, community, individual and work that we privileged to be involved with.



## INTEGRITY

We always act responsibly and maintain the highest levels of ethical and legal conduct within the company.



## COLLABORATION

We work with everyone as a team and trust others abilities.



## INNOVATION

We constantly looks for creative ways to change, solve problem and find solutions.



## SUCCESS

Your success is our priority.



# BUSINESS APPROACH

Connecting with Organization and People are the best approach to Offshore Industry Evolution.

50%

We partner with our Client and create effective strategy, taking more holistic approach to Offshore Industry Evolution.

Best Solutions

We deliver better results and fulfil our Client's objectives.

50%

We provides comprehensive resources which includes highly skilled field professionals, expertise, innovation and technologies to execute the strategy.



# SERVICE SCOPES

**I** Our key expertise of the project management team and technical supports cover a wide ranges of experiences in all Marine Geophysical & Hydrographic Surveys including cable route feasibility study and burial assessment for both offshore and inshore work scopes.

## **Geohazard Assessment and Ground Modelling**

Our service covers hazard identification and risk analysis to pre-engineering design and foundation integrity of sub-seabed geology.

## **GIS and Data Management**

We have expertise in managing spatial data using a fully-formatted map-based GIS to integrates all data into a specific project development area.

## **Feasibility / Desktop Study**

We do comprehensive study which covers all aspects of hydrography, geology, meteorology, oceanography including risk assessment related to localized activities, biological and security of the area.

## **Marine Geophysical Survey and Environmental Study**

Our technical experts with proven track records are able to respond professionally to your requirements regarding data acquisition and reporting.

## **Geotechnical Engineering**

A detailed study with reliable software and tools provides engineering input to offshore structures and foundations.

## **Professional & Technical Supports**

Our highly skilled field professionals and technical supports are available to help out based on your project requirements.

## **2D/3D Seismic Processing and Interpretation**

Our expert team with proven competence and strong background are able to find solutions for the acquired geophysical data.

## **Training and Education**

We provides a platform for fresh graduate to learn and adapt new technology in processing technique based on the acquired geophysical data.

## **Interpretation Software and Tools**

We promotes application of new technology and actively collaborate with software developer by providing technical inputs for better improvement.

# MANAGEMENT TEAM



**A.F (ABDUL AZIM FARID) ABDUL AZIZ**  
**Chief Executive Officer**

Azim previously worked with TL Geohydrographics, Exxonmobil, Fugro and Guardian Geomatic. He has extensive knowledge in marine geophysical survey, seismic processing and others related software / tools for geohazard assessment and geotechnical analysis.

He holding up BSc (Hons) in Geology, graduated in 2008 from Universiti Kebangsaan Malaysia (UKM) and has developed more than 14 years of valuable work experiences across the Asian and European region.

## ***Top management and Board of Directors (BOD)***



**JUZAILI AZMI**  
**Chief Operation Officer**

Juzaili Azmi is previously worked for Fugro since graduated with Bachelor of Honours (Geophysics) from Universiti Sains Malaysia (USM) in 2008. He has vast experience in the industry as a geophysicist, party chief, project manager and currently as consultant as well for data QA/QC and site representative.

He has good exposures in oil and gas, cable route and offshore windfarm industries which currently in demand and has developed more than 14 years experiences across the globe.

# MANAGEMENT TEAM



**FRANCIS PAYAU LUYOH**

***Executive Director***

Francis has evolved over 13 years in offshore survey industry with invaluable experiences. His career started with Fugro in 2007 and become a Survey Consultant for Ogeoseis (Orogenic group of companies) from 2013 to 2016. He pursue to be independent QA/QC Consultant for globally well known oil and gas operators in Asian region. His works appearance as Consultant has been acknowledged by Shell Sarawak, Mubadala Petroleum and other construction companies.

He graduated with BSc (Hons) in Geology from Universiti Kebangsaan Malaysia (UKM).

## ***Board of Directors*** ***(BOD)***



**RAJA MOHD FIRDAUS BIN RAJA ALJUNID**

***Executive Director***

Raja Mohd Firdaus graduated with Bachelor of Engineering in Electrical Power from Curtin University of Technology, Australia. He elevate himself to Master's in Computer Science from Universiti Kuala Lumpur (UKL). He has successfully managing and implementing system networks in IT & Telecommunication Infrastructure Systems for Klang Valley Mass Rapid Transit 2, Penang Smart City blueprint, Telekom New Zealand, Telkomsel Indonesia, M1 Singapore and Orange Vanuatu etc. for Alcatel-Lucent (known as NOKIA). He has more than 14 years of experiences in managing various engineering telecommunication projects.



# RESEARCH ASSOCIATE IN GEOPHYSICS



**ZUFRY MALIK IBRAHIM**

***Research and Development Director***

The Founder of Wadugs (Processing and Interpretation Software for Geophysical Survey Data – Analogue and Digital).

## TWELVE YEARS OF INDUSTRY EXPERIENCE

Zufry was appointed as Research and Development Director in January 2021 and responsible for research, planning and implementing new programs including overseeing the development of new products aligned with industry evolution.

He holding up Master of Research in Exploration Geophysics (Migration Velocity Analysis) from Institut de Physique du Globe de Paris and Mines ParisTech, France. He has extensive knowledges in Seismic Processing, Programming Language and other Geophysics-Related softwares for processing and interpretation of the acquired geophysical data..

## WORK HISTORY

- ▶ 2016 – 2022: Freelance Geophysicist
- ▶ 2012 – 2015: Fugro Survey Pte. Ltd.
- ▶ 2010 – 2012: Earth Physics Laboratory, Institut Teknologi Bandung.

# TECHNICAL ADVISOR (LAND SURVEY SERVICES)



***Prof. Dr. Rosli Sa'ad***  
***Technical Advisor / Land Survey***  
***Manager***

The Founder of Global GeoExperts  
Sdn. Bhd.

## MORE THAN 36 YEARS OF EXPERIENCE IN GEOPHYSICS FIELD

Prof. Dr. Rosli is a professional geophysicist with vast experience in both academic and industry. He is a founder of Global GeoExperts Sdn. Bhd. which focusses on EXPLORATION GEOPHYSICS. He also appointed as Deputy Director and Head of Geophysics for Centre of Tropical Geoengineering (GEOTROPIK), Johor since 2017. A geophysics graduate (PhD, MSc and BSc) from Universiti Sains Malaysia (USM), Prof. Dr. Rosli had served as an academician, researcher and consultant (under USM Consultancy Arm) there until retirement. With more than 36 years in the geophysics field, Prof. Dr. Rosli has worked with various professional bodies including JMG, GAMUDA/MMC, Iskandar Investment Bhd, Ranhill SAJ Sdn. Bhd., IJM and JKR. He has also worked closely with international organisations such as Guideline Geo (Sweden) and Geomative (China), as well as contributing his expertise to global projects in Philippines, Indonesia and Saudi Arabia.

He has extensive experiences in academic and industry (i.e., pipe jacking, groundwater exploration in soils and rock, mapping leachate, liquefaction study, archaeological investigations, mapping buried utilities, geothermal and fault studies, landslides, mining and quarries). In addition, he has contributed / published books in related fields.

- Potential Effects of Quarry Operations on Workforce Safety (Chapter 21, 2011)
- Application of geophysical methods in construction and groundwater assessment (UTM, 2013)
- Application of geophysical methods in subsurface investigation (UTM, 2013)
- Assessment of excavatability and groundwater using 2D resistivity imaging method (UTM, 2013)
- Excavatability of rock and assessment of groundwater by using 2D resistivity imaging method (UTM, 2015)
- Geophysical studies of Bukit Bunuh meteorite crater evidence (USM, 2016)
- Basic seismic refraction survey and data interpretation techniques (USM, 2018)
- Pengimejan kerintangan 2D dan seismik biasan (DBP, 2019)
- 2D electrical imaging assesement for geotropical region issues (USM, 2019)

His vast contribution to the industry includes not only countless successful projects, but also nurturing students to become future leaders in geoscientists.

# LEAD DATA PROCESSOR



**FRILEENO NYAYONG**

## ***Chart and Data Processor***

Multi-disciplined roles with invaluable experiences in processing for all marine geophysical survey data.

## 16 YEARS OF INDUSTRY EXPERIENCE

She Joined UGEO in December 2020 and appointed as Chief Surveyor cum Data Processor responsible for QA/QC of the acquired geophysical data.

She has extensive knowledges in data processing with multi-disciplined role as Surveyor and Data Processor for both offshore and onshore base.

She has been Involved in ROV survey (positioning and construction supports) and geophysical survey for pre-engineering design (cable and pipeline route survey). In addition, he has experiences in geotechnical survey and office project management and technical support to offshore team.

She is holding up Bachelor of Engineering (Geomatics), graduated in 2008 from Universiti Teknologi Malaysia.

## WORK HISTORY

- ▶ 2019 – 2020: Independent Contractor (Freelance)
- ▶ 2008 – 2019: Fugro Malaysia Marine Sdn. Bhd.

# HUMAN RESOURCE, ADMINISTRATION & FINANCE



## **HAFIZUDIN BIN ZAKARIA**

### ***HR, Admin & Finance***

Multi-disciplined roles with invaluable experiences in Manpower, Management and Finance.

#### THIRTEEN YEARS OF MANAGEMENT EXPERIENCE

Hafizudin has the experience of 13 years in finance, administration, human resource, management, project handling, safety & quality and even sales with vast knowledge in managing manpower, admin and finance.

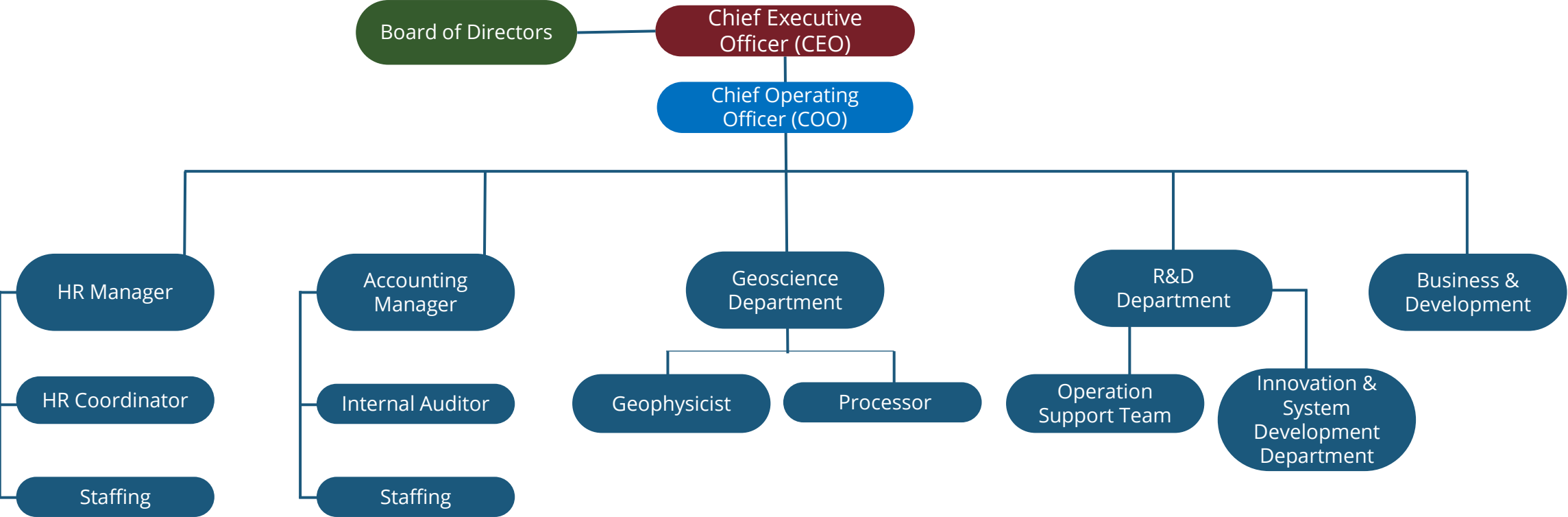
He has a Bachelors Degree in Nuclear Science from National University of Malaysia. Even with a different background of degree, he has gone to several seminars, short courses such as Safety and Health Officer Course, Risk Management, Corrective and Preventive Action, Finance Management to be knowledgeable in his field.

#### WORK HISTORY

- ▶ 2012 – 2022: MSI Venture Sdn Bhd.
- ▶ 2010 – 2012: Heet (M) Sdn Bhd.
- ▶ 2009 – 2010: Transworldmark Freight (M) Sdn Bhd.

# ORGANIZATIONAL CHART

Our main operating base in Kuala Lumpur, Malaysia meanwhile Research and Development center is stationed in Depok, Indonesia.





# CLIENTS & PERFORMANCES

Recent projects;

- Provide technical support and reporting for 3D Shallow Geohazard Assessment for Mubadala and Petronas
- Processing, Interpretation and Reporting for pipelines and sites surveys for various clients
- Consultancy services, Desktop Study, Route Engineering and reporting for multiple cable routes projects
- Consultancy services for offshore windfarm projects in Taiwan, Korea and UK
- Consultancy and representative services for PTTEP on Geophysical and Geotechnical survey works in Malaysia in 2022 – present.
- Provides professional and reporting support for Fugro South Africa – Offshore Angola (Environmental and Geotechnical work scopes), 2020 and Fugro Malaysia Marine in 2022-2023
- MOU with Wadugs for in-house software development and provides technical inputs and testing the capabilities of the software modules.



JAVA OFFSHORE



# WORK RECORDS

Currently, our office base in Kuala Lumpur, Malaysia.



# PARTNERSHIP

| Teamwork is the key to success!!!

## COLLABORATION

We offering a flexible term in partnership agreement based on your requirements. We are very optimistic in our works and guarantee your success based on the following criteria.

- ▶ We creating credit to your company through innovation.
- ▶ We provides expertise in respective field.
- ▶ We deliver better results with cost-effective solution.
- ▶ We do respect and follows industry business standard in all aspects to ensure a safe work practices without harm to people, assets and environments.



We respect diversity, community, individual and work that we privileged to be involved with.



We work with everyone as a team and trust others abilities.